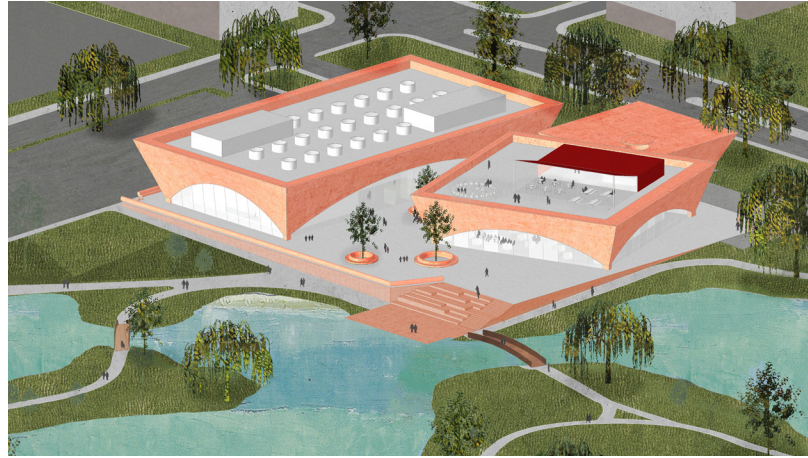


# Winter Park Approves Adjaye Associates' Design for New Library and Events Center



WINTER PARK, FL – November 14, 2017 – Last night, Winter Park City Commission unanimously approved Adjaye Associates' concept design for the future Winter Park Public Library and Events Center. The \$30 million project consolidates and replaces the existing library and civic center buildings and will be located on the northwest corner of a reinvigorated Martin Luther King Jr. Park.

Firm principal Sir David Adjaye presented the concept to the Winter Park City Commission and 300 community members on November 1st. The design consists of a micro-village of three pavilions, each of different scale and function but which share a common formal language. Structural arches, inspired both by local fauna and the region's vernacular architecture, form vaulted rooflines and sweeping windows, establishing a porous relationship between interior and exterior and drawing natural light deep into the buildings. The pavilions respectively house the new library, event center and a new welcome pavilion and rest on a raised belvedere that provides privileged, dramatic views onto the lake, increases connectivity to the park and supports exterior community spaces that run between the three buildings.

"Our goal is to create a vibrant community village that engages the beauty of the park, maximizes social interactive spaces and holds collaborative learning and education at its core," said Adjaye. "I am thrilled that Winter Park has embraced our vision, which is truly about celebrating of the city's heritage and preparing for its future."

The diverse program includes flexible floorplates that support collection spaces accessible to all ages and abilities, interactive youth and children areas, an indoor auditorium, makerspaces and technology portals, a business center, continuing education spaces, Winter Park historical and archival collection spaces, community meeting rooms and private reading rooms.

"We tasked the design team with creating an inspirational complex to provide a multitude of uses," said Winter Park Mayor Steve Leary. "It has to provide a 21st century learning environment while also incorporating an entertainment venue for the community. We wanted a unique and forward-looking aesthetic that still felt true to our heritage and it had to be "of the park," rather than simply a structure within the park. Sir David and his team delivered on our request and exceeded our expectations."

"The library is thrilled with the design as an inviting place for 21st century learning, collaboration and community," said Dan McIntosh, President, Board of Trustees, Winter Park Library Association. "The design reflects the experiences we've hoped and planned for with input from Winter Park residents and one of the most prestigious think tanks in the world, The Aspen Institute. Sir David Adjaye's design fuels the imagination, incorporates the park and elements unique to Central Florida, and will provide 360° access to learning for generations to come."

Adjaye Associates was announced as the design architect in April of this year. The firm is collaborating with a world-class team on the new community asset, including architect of record HuntonBrady, owner's representative Pizzuti Solutions and construction management team Brasfield & Gorrie and Lamm & Company. Construction is due to begin in fall 2018 and conclude in the first half of 2020.

## Note to editors:

Further information and full image set available [here](#)

Highlights from the conceptual presentation available [here](#)

All images copyright Adjaye Associates

## Contact:

Adjaye Associates  
Josh Ellman  
+1 (212) 965 8477  
[josh@adjaye.com](mailto:josh@adjaye.com)

City of Winter Park  
Clarissa Howard  
+1 (407) 599 3428  
[choward@cityofwinterpark.org](mailto:choward@cityofwinterpark.org)



Winter Park  
PUBLIC LIBRARY

Adjaye Associates

--Ends--

[www.adjaye.com](http://www.adjaye.com)

## **Adjaye Associates**

Adjaye Associates was established in June 2000 by founder and principal architect, Sir David Adjaye OBE. Receiving ever-increasing worldwide attention, the firm has offices in London, New York and Accra and completed work in Europe, North America, the Middle East, Asia, and Africa. The firm's largest project to date, the Smithsonian Institution's National Museum of African American History and Culture, opened this past fall on the National Mall in Washington D.C. Further projects range in scale from private houses, exhibitions, and temporary pavilions to major arts centers, civic buildings, and masterplans. Renowned for an eclectic material and color palette and a capacity to offer a rich civic experience, the buildings differ in form and style, yet are unified by their ability to generate new typologies and to reference a wide cultural discourse.

## **City of Winter Park**

One of the finest cities in the United States, Winter Park, Fla., is considered by many to be the premier urban village in the sunshine state. With its rich heritage, strong sense of community, vast parks system, diverse economic base, and beautiful chain of lakes, the city provides a high quality of life to both its residents and visitors alike. Located just three miles north of Orlando in Orange County, the city is nine square miles with over 29,000 residents. Known for its Old World charm, elegant homes, quaint bricked streets, extensive tree canopy, first-class shopping and dining experiences, world-class museums and Rollins College, the City of Winter Park is truly a unique community with an international appeal. For more information, please visit us online at [cityofwinterpark.org/nextchapterwp](http://cityofwinterpark.org/nextchapterwp).

## **Winter Park Library**

The Winter Park Public Library inspires learning, opens minds and transforms lives by providing the highest quality library materials, programs and services. Founded in 1885, the WPPL is a 501(c)(3) nonprofit organization that enjoys an enduring public-private partnership with the City of Winter Park which provides Winter Park residents with a margin of excellence in services and programming that neither could provide on its own. With over 15,000 borrowers, program participation has soared over 50 percent in the last two years as the WPPL develops innovative and collaborative initiatives to meet the needs of residents of every age and demographic. For more information about the WPPL, visit [www.wppl.org](http://www.wppl.org) or call 407-623-3300.